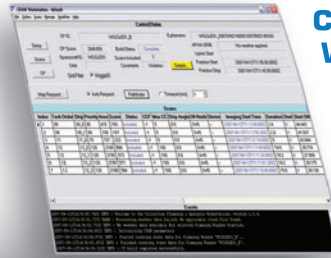


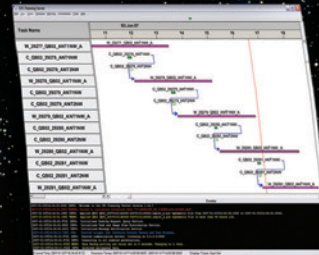
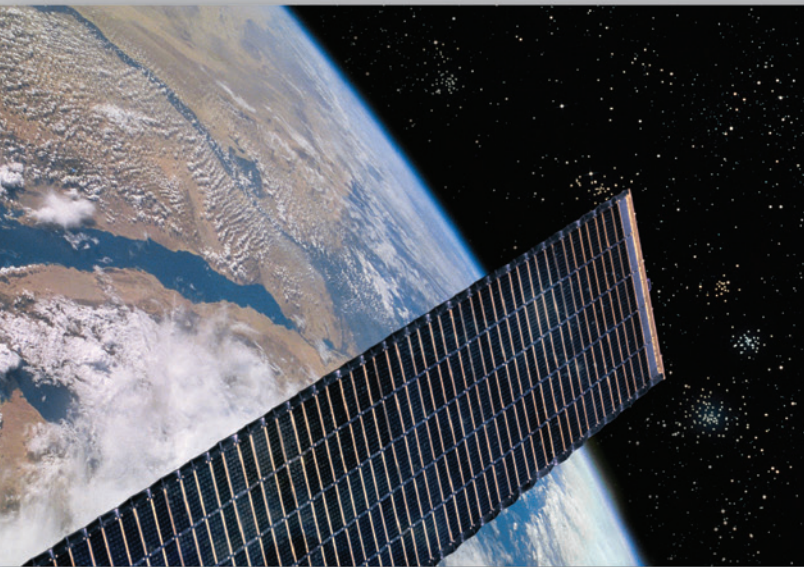
Better Planning = Better Results

From collection planning to contact scheduling and resource assignment, maximize the return from your system with an Orbit Logic planning solution.



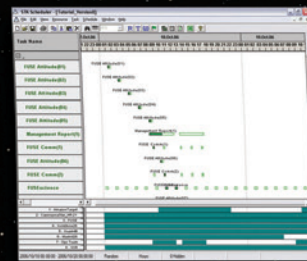
Collection Planning Workstation (CPAW)

- Optimized Collection Planning
- High Fidelity Spacecraft Modeling



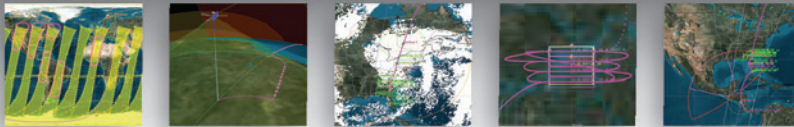
Collection Planning Manager (CPM)

- Contact Scheduling and Deconfliction
- Recorder Management
- Automation and Scalability

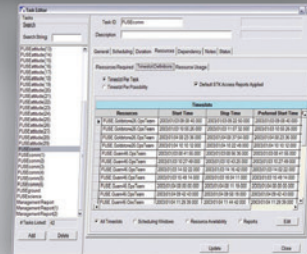


STK/Scheduler

- Flexible Task and Resource Definition
- Resource Deconfliction
- Schedule Optimization
- Seamless Interface with Satellite Tool Kit



Orbit Logic COTS software products reduce the risk, schedule, and cost typically associated with ground segment mission planning and scheduling components by reducing or eliminating new software development. At the same time, our advanced algorithms and automation features return better schedules faster, and with less manpower than ever before. Standardized interfaces ensure easy and seamless integration with your existing ground segment components. Orbit Logic software is the most widely-deployed COTS scheduling solution in the aerospace industry... how do you schedule?



SATURN Scheduler

- Generic Scheduling Utility
- Standard Open Interfaces



Air Support MPS (coming soon!)

- UAV Flight Planning
- Close Air Support Planning
- Configurable Sensor & Weapon Modeling
- Target Management



Advanced Mission Planning and Scheduling

301-982-6232
info@orbitlogic.com
www.orbitlogic.com

Visit Orbit Logic at the GEOINT 2007 Symposium, booth # 450